

## AIR PREPARATION UNITS REGULATOR Series R3

Cat No R3 - 01 - 01 - A

### REGULATOR - G1/4" & G1/2"

#### Features

- Clean design
- Conforms to ISO 6953 - 1
- Non raising 'Press to Lock' adjusting knob for locking at any set pressure
- Diaphragm operated, relieving type
- Pressure compensated by balanced poppet
- Flow compensated (with venturi) for faster response
- Inbuilt flush type pressure gauge, it can be mounted at both ends and Inverted position
- Four pressure regulation range
- High flow rate
- Built in non return valve allows free air flow in reverse direction, when the inlet air is reduced below the setup pressure
- Good flow and regulating characteristics
- Padlock provision is provided to secure the pressure setting values
- Suitable for panel and modular mounting
- Quick release bayonet type bottom plug



#### Function

A pressure regulator maintains a constant output pressure in compressed air systems regardless of variations in input pressure.

#### Technical Specifications

Model	R33...	R35...
Medium	Compressed air - Filtered	
Port size	G1/4	G1/2
Flow rate @ (lts/min)	1200	4500
Working pressure range (bar)	0.8 to 15	
Regulating pressure range # (bar)	0.2 - 2, 0.2 - 4, 0.5 - 7, 0.5 - 10 (Standard)	
Ambient temperature ** (C)	-10° to +60°	
Medium temperature (C)	+5° to +50°	
Installation	Any position	
Materials of construction	Die cast Aluminium, Brass, Steel, Nitrile, Polyamide, Acetal, Stainless steel	
Optional accessories *	Clamp, Modular mounting kit	
Weight (Kg)	0.2	0.7

@ - Supply pressure 10 bar, Set pressure 6.3 bar, Pressure drop  $\Delta p = 1$  bar as per ISO standard ( For standard models )

\* - For details refer optional accessories Cat No APA- 01 - 05 - A

# - For details see " How to order "

\*\* - Ambient temperature +5° to +50°C for Pressure gauge and Pressure sensor model

#### Precautions

1. Note the direction of flow before installation and connect piping accordingly.
2. Flush piping's for dirt, dust, rust and other foreign particles.
3. Install in clean atmosphere.
4. Nipples of taper threads (R) to be used with Teflon tape. Ensure Teflon tape does not enter the unit during tightening. Nipples of straight threads (G) to be used with sealing washer.

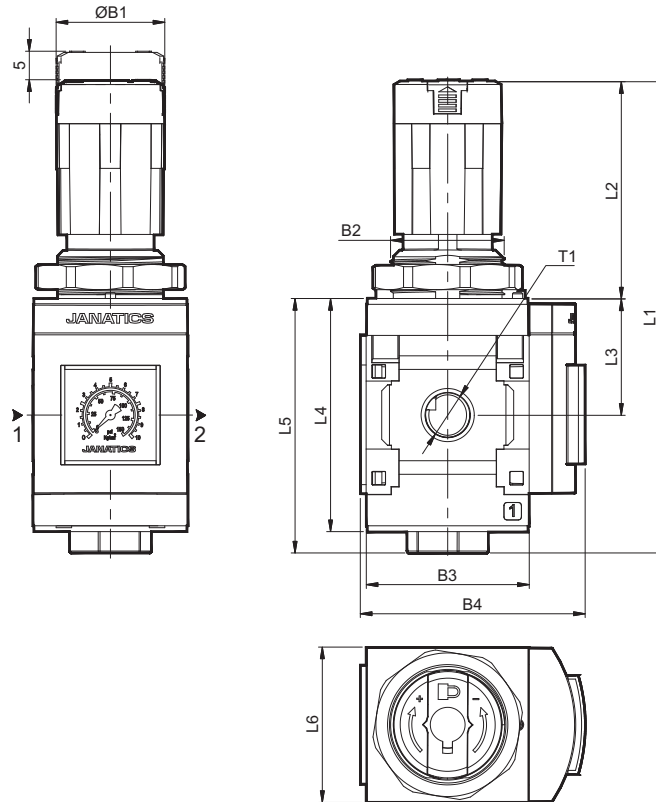
# AIR PREPARATION UNITS

## REGULATOR Series R3

Cat No R3 - 01 - 01 - A

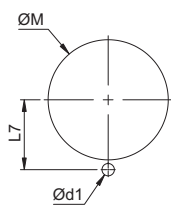
### Model R3...

Standard

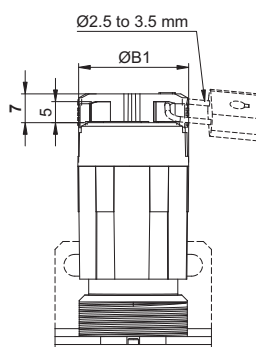


For Details of Clamp see optional accessories Cat No APA - 01 - 05 - A

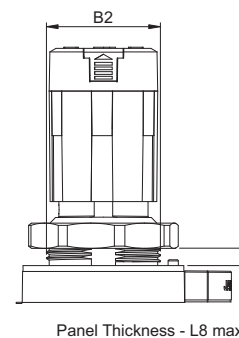
### Panel Cut Hole Dimension



### Pad Lock Provision



### Panel Mounted



Model	T1	L1	L2	L3	L4	L5	L6	L7	L8	ØB1	B2	B3	B4	ØM	Ød1
R33...series	G1/4	121.5	56	30	60	65.5	40	18	4.5	28	M30x1.5	42	58	31	3.2
R35...series	G1/2	185	84	45.5	91	100.5	62	27	7	42.5	M45 x1.5	62	77.5	46	3.5

### Pressure Setting

1. Pull the knob and adjust by turning the knob in clockwise direction to increase the pressure. Push the knob back to its locked position (Turning the knob counter clockwise will reduce the pressure)
2. Maintain the supply pressure, 1bar more than the set pressure value.

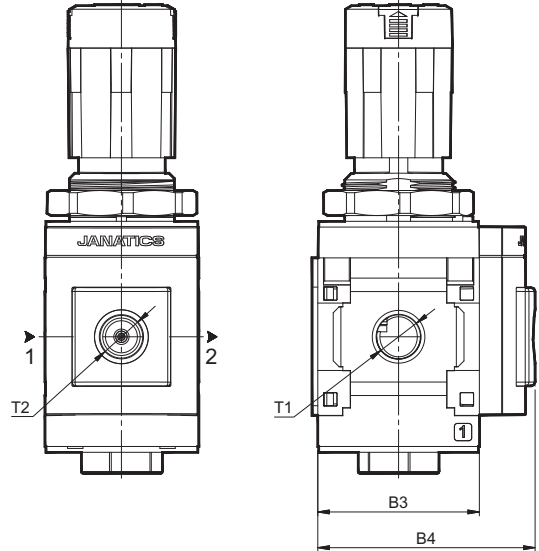
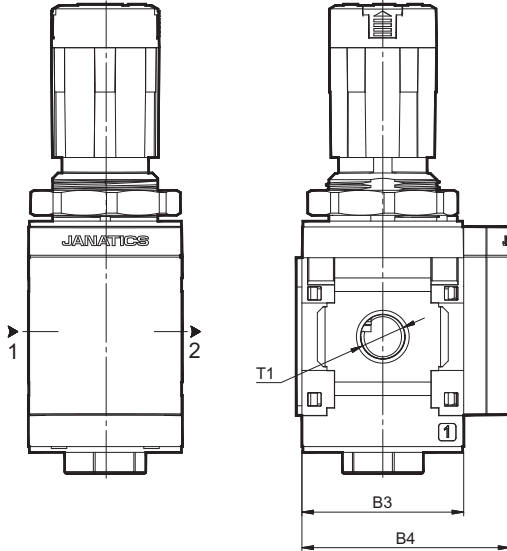
# AIR PREPARATION UNITS

## REGULATOR Series R3

Cat No R3 - 01 - 01 - A

With Front cover

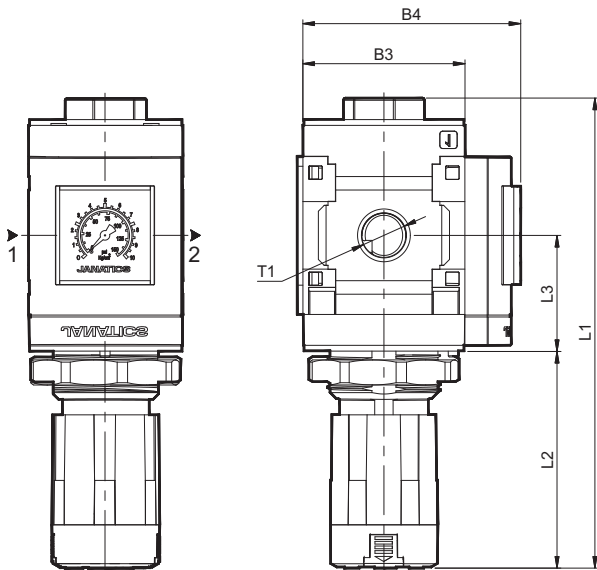
With adaptor plate (Suitable for 1/8" thread)



Model No.	T1	B3	B4
R33...-F1... series	G1/4	42	55.5
R35...-F1... series	G1/2	62	77.5

Model No.	T1	T2	B3	B4
R33...-F2... series	G1/4	G1/8	42	58
R35...-F2... series	G1/2	G1/8	62	77.5

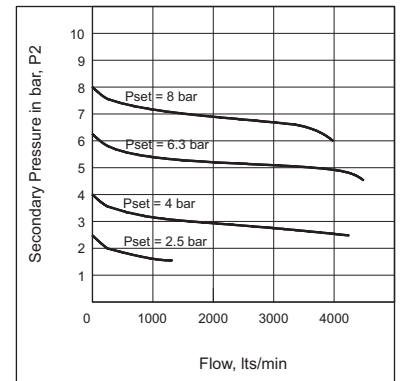
Reversed mounting position  
with Flush type pressure gauge



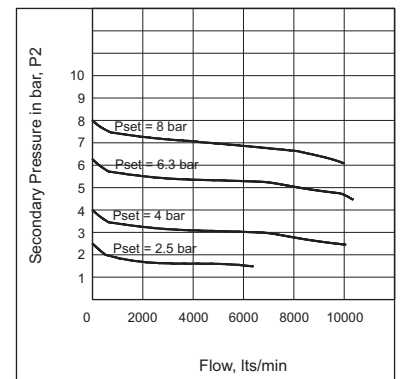
Model No.	T1	B3	B4	L1	L2	L3
R33...-F3... series	G1/4	42	58	121.5	56	30
R35...-F3... series	G1/2	62	77.5	185	84	46

### Flow Graph

1/4" REGULATOR



1/2" REGULATOR



# AIR PREPARATION UNITS

## REGULATOR Series R3

Cat No R3 - 01 - 01 - A

### Caution

1. Set the required pressure in regulator by visually verifying the displayed pressure values in pressure gauge.
2. For pressure setting, the knob should be operated manually. Do not use any tools for adjusting / turn the knob, it may cause damage to the knob as well as internal parts. Refer Fig. (a)
3. Do not adjust or turn the knob with knob locked condition and padlock fixed condition else it may damage the knob as well as internal parts. Adjust or turn the knob after removing the pad lock and knob unlocked condition. Refer Fig. (b)
4. Do not pull the lifter knob when the pressure adjusting knob in unlocked condition.
5. For fixing the pad lock, push the knob in downward direction for locking and then pull the lifter knob. Refer Fig. (c)
6. Repeated or sudden increase and decrease in pressure pulsation must be avoided because it could adversely affect the life of pressure gauge.
7. Applying pressure beyond the pressure range could damage the pressure gauge.
8. Pad lock should be selected in such way that it should exactly fit or slightly less than the slot in the lifter knob. Wrong selection will lead to malfunction.

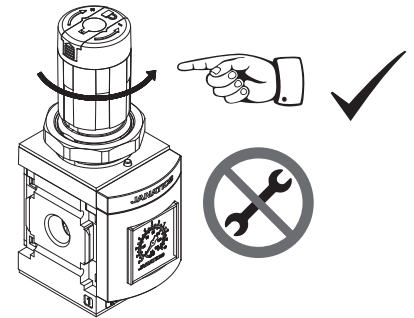


Fig. (a)

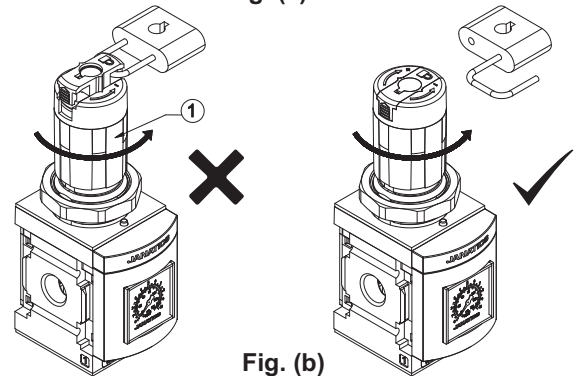


Fig. (b)

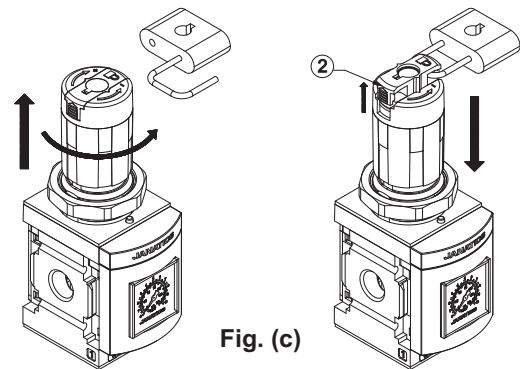


Fig. (c)

### How to order

<b>R3</b>	<b>361</b>	<b>4</b>	—				
<b>Body &amp; Port size</b>		<b>Pressure range</b>		<b>Front side mounting Accessories</b>		<b>Rear side mounting Accessories</b>	
<b>361</b>	1/4" & G1/4	<b>1</b>	0.2 - 2 bar	<b>Nil</b>	with Flush type Pressure gauge (standard position)	<b>Nil</b>	Without Accessories
<b>563</b>	1/2" & G1/2	<b>2</b>	0.2 - 4 bar	<b>F1</b>	with Front cover	<b>C1</b>	Clamp (panel mounting)
		<b>3</b>	0.5 - 7 bar	<b>F2</b>	with Adaptor plate 1/4 - G1/8	<b>C2</b>	Clamp (standard)
		<b>4</b>	0.5 - 10 bar (Standard)	<b>F2</b>	with Adaptor plate 1/2 - G1/8		
				<b>F3</b>	with Flush type Pressure gauge (Reversed position)		

### Ordering example:

Regulator - 1/4 size (with G1/4 port), Pressure range 0.5 - 7 bar, with Front cover and Clamp (panel mounting) :  
Ordering No: **R33613-F1C1**

If ordered as 1/4 Regulator, our standard model **R33614** with pressure range 0.5 - 10 bar (standard) and with Flush type pressure gauge (standard position) will be supplied.